

253rd American Chemical Society National Meeting • San Francisco, California
2017 WCC/Eli Lilly Travel Award Poster Session

Tuesday, April 4, 2017 • 11:00 am–12:00 pm
Grand Ballroom A • Hilton Union Square



Sarah I. Allec, *University of California, Riverside*



GPU-enabled real-time electron dynamics of nitrogen-doped graphene nanoflakes
COMP

Alexa R. Barres, *University of Wisconsin, Madison*



Formulation and study of highly stable, semifluorinated nanoemulsions with theranostic applications
COLL

Katherine A. Benavides, *University of Texas, Dallas*



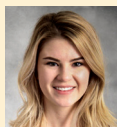
Antimony nets and transition metal sublattices: The structure and properties of $\text{Ln}_2\text{Fe}_{4-x}\text{Co}_x\text{Sb}_5$ (Ln = La-Pr; $x < 1.5$)
INOR

Audrey T. Gallagher, *Northwestern University*



Isolation of metalloporphyrin dioxygen adducts in metal-organic frameworks
INOR

Anna C. Krieger, *Gustavus Adolphus College*



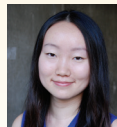
Iron and cadmium binding in metalloprotein II and myohemerythrin from *Hediste diversicolor*
INOR

Kelly M. Powderly, *Northwestern University*



Synthesis and low-temperature properties characterization of superconducting Ni_{1-x}Bi
INOR

Elaine A. Qian, *University of California, Los Angeles*



Atomically precise Organomimetic Cluster Nanomolecules (OCNs)
INOR

Taylor M. Sodano, *University of Michigan, Ann Arbor*



Alkaloid-like substructures via photoredox catalysis: Synthesis of 1-aminonorbornanes
ORGN

Madeline K. Wheeler, *Dickinson College*



Comparison of synthetases in the incorporation of the non-natural amino acid p-azidophenylalanine in the oncogenic protein kRas
BIOL

Bib Yang, *University of Massachusetts, Amherst*



Selective detection of protein homologues by outer membrane protein G nanopore
BIOL



Eli Lilly and Company is acknowledged for its support of the WCC/Eli Lilly Travel Awards program

WCC Chair:
Laura S. Sremaniak,
North Carolina State University

WCC Awards & Recognition Subcommittee Co-Chairs:
Amy Nicely, *Parkland College*
Christine Chow, *Wayne State University*